

Greene County Memorial Hospital Foundation

7 East High Street
Waynesburg, PA 15370

www.GCMHFoundation.org

Fall 2009
Volume 2.1



Camp Challenge comes to a close at Pittsburgh Zoo

For the fourth consecutive year, GCMHF provided funding for Camp Challenge, which is administered by Washington Greene Job Training Agency, Inc. This camp operates concurrently with Greene County Parks and Recreation Day Camp and is offered to all youth, age nine to eleven at Mon-View Park, Lions Club Park, Ryerson Park and Wana B Park in Carmichaels.

During the four-week camp, the instructor, Mr. Liam Ryan, taught lessons covering Self-esteem, goal setting, social skills, etiquette and behavior, nutrition/fitness and career exploration focusing on health care. The lessons were taught weekly in a fun, interactive environment and each participant received a Camp Challenge T-shirt and backpack. Approximately ninety children registered for Camp Challenge, fifty participated weekly and forty participants attended the fieldtrip, which was held on July 28th at the Pittsburgh Zoo. All attendees received a catered lunch, along with a zoo gift bag. It was a great experience for all involved.



In This Issue:

Camp Challenge

Financial Report

Golf Outing Results

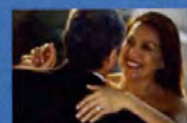
Board member bio:



Save the date:

Harvest Ball

Nemacolin
Woodlands Resort
November 14, 2009.
Call now to register!



Financial Report, 2008

June 30, 2009 marked the end of the fiscal year for GCMHF. Certified accountants Frank P. Hess & Co. provided the financial statement and were instrumental in completing Form 990, which is required of non-profit organizations. The following represents excerpts from Form 990, which can be obtained through the GCMHF website (www.GCMHFoundation.org).

Balance sheet - June 30, 2009

<u>Assets</u>	<u>Unrestricted</u>
Cash and equivalents	\$ 88,168
Investments	<u>\$ 9,581,381</u>
TOTAL ASSETS	\$ 9,669,549
<u>Liabilities and Net Assets</u>	
Liabilities	\$ 0
Unrestricted Net Assets	<u>\$ 9,669,549</u>
TOTAL LIABILITIES AND ASSETS	<u>\$ 9,669,549</u>

Statement of Activities

<u>Support and Revenue</u>	<u>Unrestricted</u>
Bequest	\$ 757,730
Interest and dividends	\$ 426,539
Insurance refund	\$ 234,307
Contributions and grants	\$ 16,088
Special events (net of \$31,058 direct costs)	\$ 27,826
Capital losses	\$ (255,706)
<u>Expenses</u>	
Program	\$ 267,063
Administration	\$ 126,995
Fundraising	\$ 12,657
<u>Net Activity</u>	\$ 800,069
<u>Net Assets - Beginning of year</u>	<u>\$ 8,869,480</u>
<u>Net Assets - End of year</u>	<u>\$ 9,669,549</u>

Golf Outing

On July 17, 2009, the second annual GCMH Foundation Golf Benefit was held at Rohanna's Golf Course in Waynesburg, PA. Fifty-two golfers came out despite weather forecasts that were not very promising. For a few hours it appeared as though the rain would hold off, but alas, down it came...and hard...and for a long time.

The leader in clubhouse, which proved to be a good thing as play was not able to be continued, was the team from Rolling Meadows Nursing Home, which posted a score of ten

under par for twelve holes. Just behind them at nine under, was the team from Rhodes & Hammers Printing, with the FNB Wealth Management team, who came in all the way from Johnstown for the day, placing third.



Many individual skill prizes were also awarded, along with Jay Hammers, the GCMH Foundation President, taking home the top putting prize, despite the obvious handicap of putting from the wrong side.



Getting to know your GCMH Foundation Board Members

Sheila Elliott Stewart, Vice President



Sheila was appointed Assistant Vice President and Branch Manager of the Waynesburg branch of First National Bank of Pa in 1999. In her position, she is responsible for supervising branch operations, market & business development, and playing a leading role in the acquisition of loans and deposits for the Greene County Market. With over 27 years' of banking experience, Sheila has served in various capacities in the banking industry.

She attended Waynesburg College, where she majored in Business. She is an active member and/or officer with the following organizations: Waynesburg Area Chamber of Commerce, Waynesburg Rotary Club, Greene County Industrial Development Inc. and Greene County Industrial Development Authority.

Sheila previously has served with the following organizations: Corner Cupboard Food Bank, Greene County Historical Society, King Coal Association, Carmichaels Area Chamber of Commerce and Waynesburg Central Boy's Basketball Boosters. She can also be credited with helping to create 2 area organizations: Waynesburg High School Baseball Boosters in 1997 and Rain Day Scholarship, Inc. in 2002. Sheila is a current member of Waynesburg Bible Chapel having served many years as a Junior Church Teacher and Nursery Worker.

Sheila was recently married in September, 2008. She and her husband, Ray, reside in Waynesburg. Sheila has two children, J.P. and Kaylie Barger.

If you want to see all GCMH Foundation Board Members, or just find out more about us, please go to our web site @www.GCMHFoundation.org.